

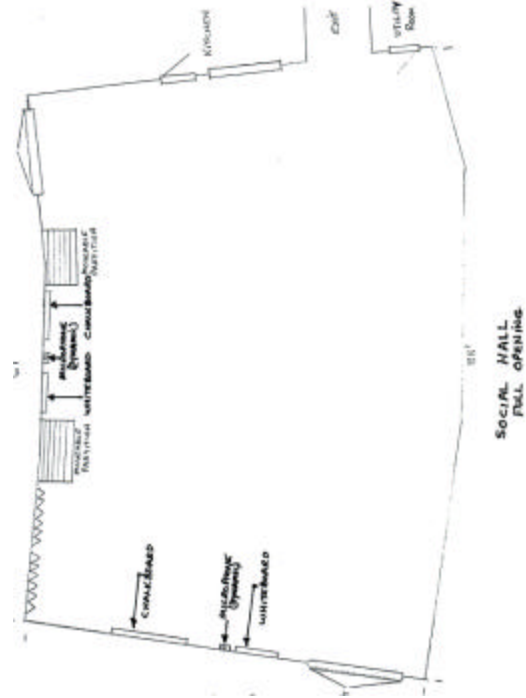
St. Elizabeth Ann Seton Church

Social Hall Set Up Charts

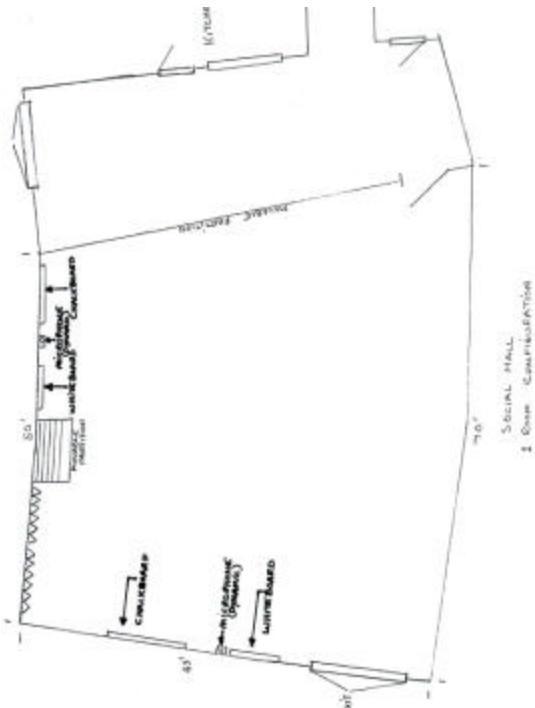
Draw a diagram of how you want the room to be set up for your function. A volunteer will then use this form as a guide when setting up the tables and chairs for you.

Note there are three ways to divide the Social Hall, so please mark the correct illustration.

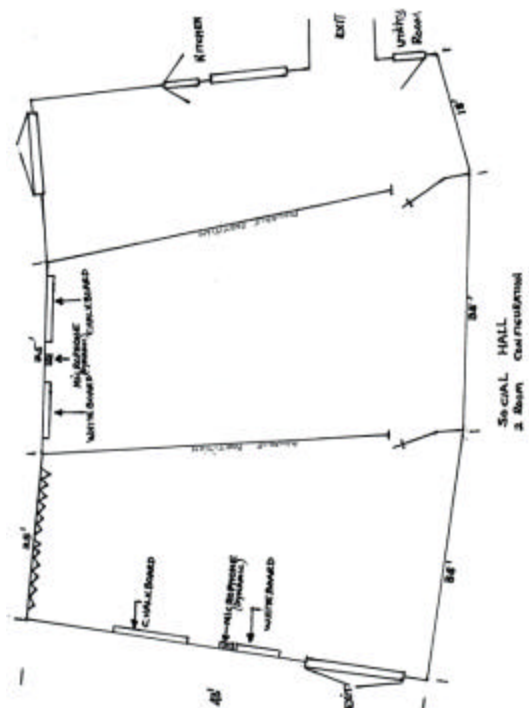
The Gospel Rooms are shown on the opposite side. If using one or more of those rooms, please draw a diagram of the set up on the correct illustration.



One Room Configuration



Two Room Configuration



Three Room Configuration

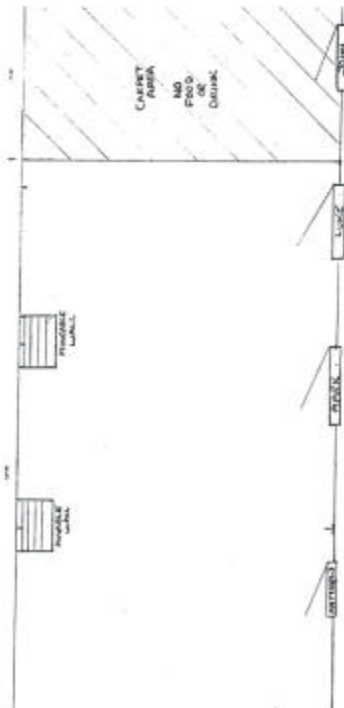


St. Elizabeth Ann Seton Church

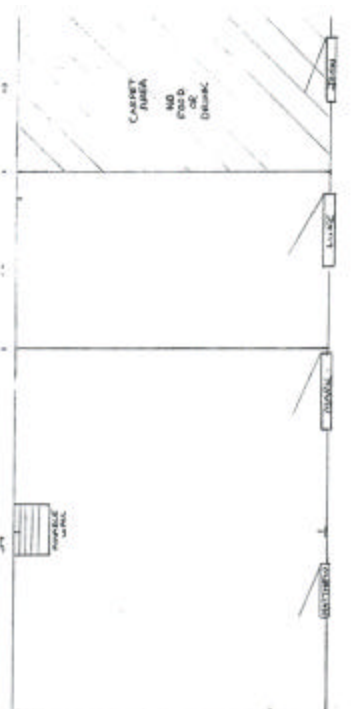
Gospel Rooms Set Up Charts



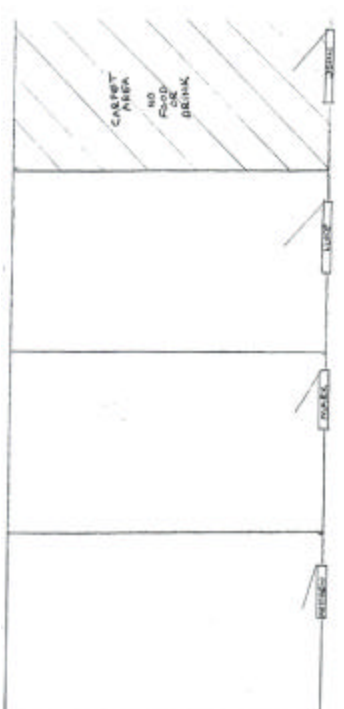
One Room Configuration



Two Room Configuration



Three Room Configuration



Four Room Configuration



NEW AREA
5 Room Configuration



NEW AREA
4 Room Configuration